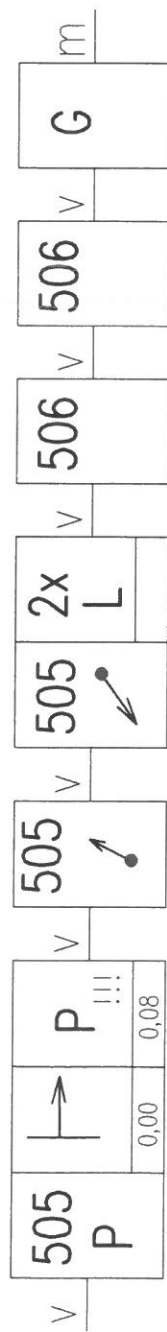
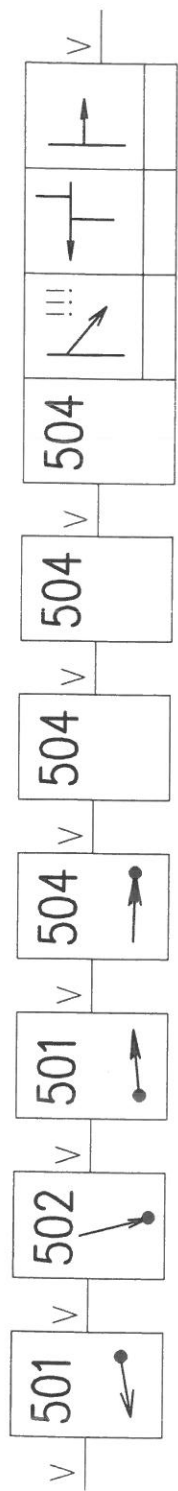






## VL2: VÝCHODNÁ

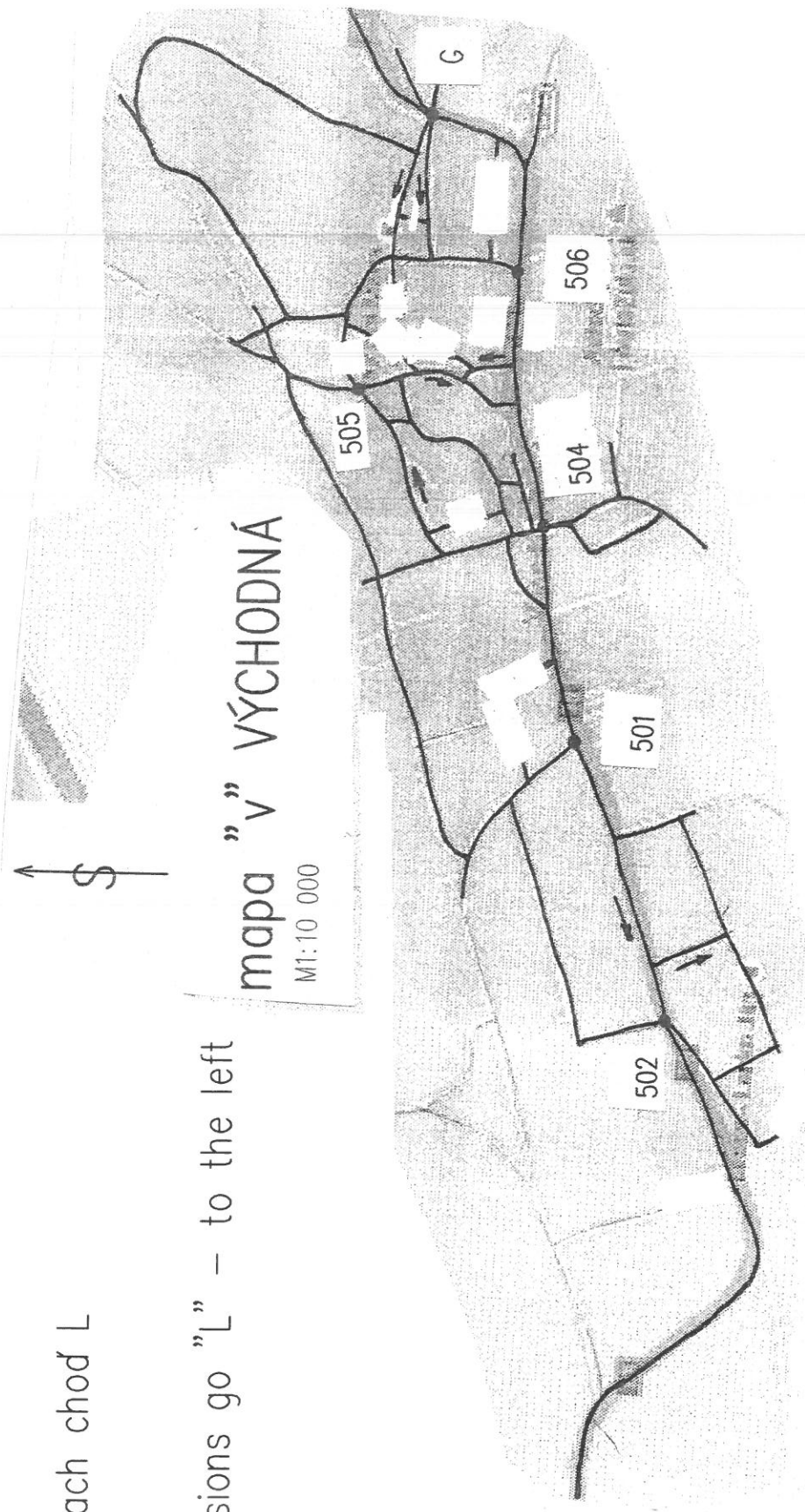


## PODMIENKY

-v párných kótach chod' L

## CONDITIONS

-in even dimensions go "L" - to the left



VL3: VAŽEC

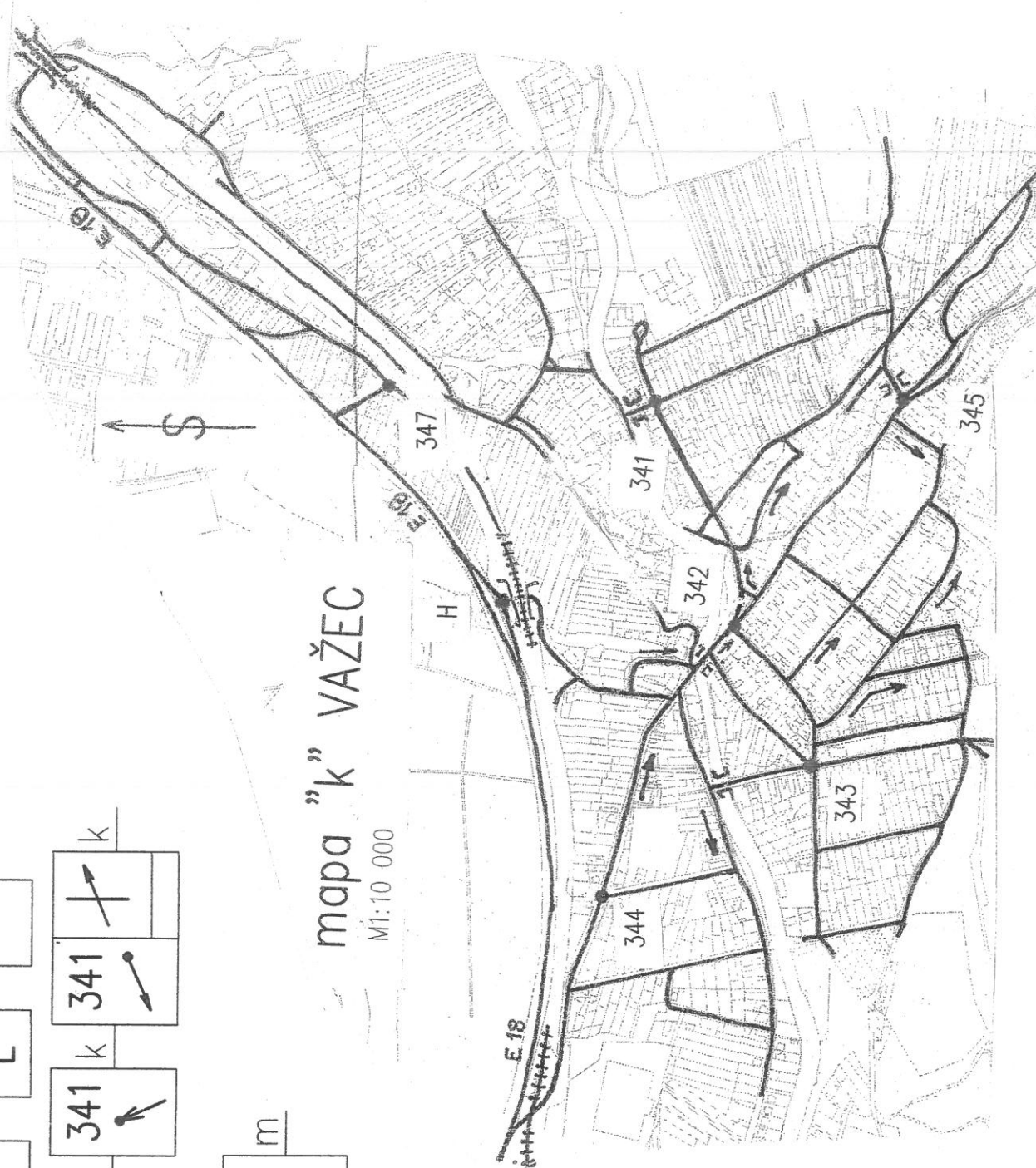
m	H	344 k	343 k	343 k	342 k
		P	↗	P	

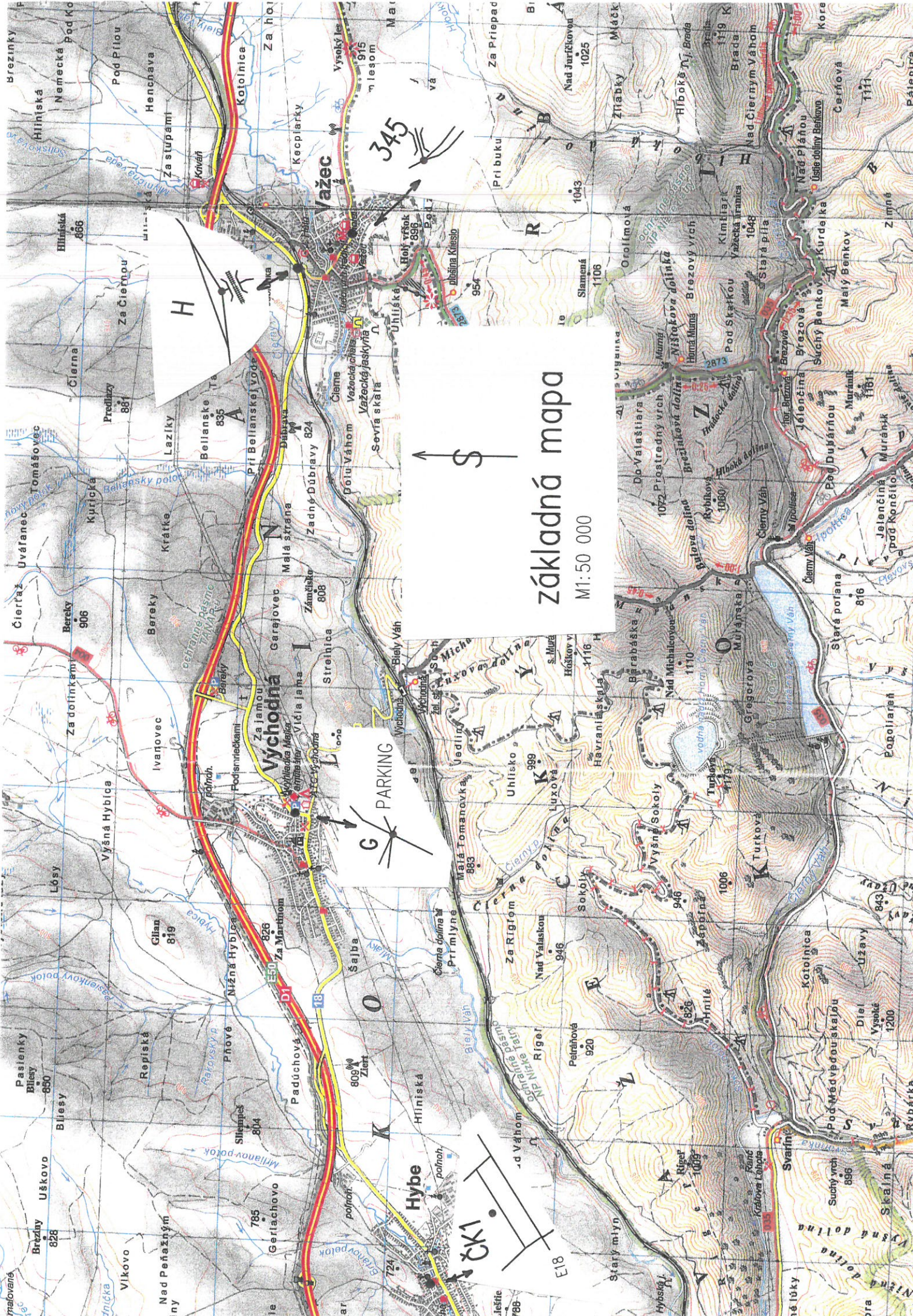
k	342	R	L	345 k	341 k	341 k
	↙			↗	↖	↗

k	344	↙	P	345 g(n)	m
	↙			↗ ↘ ↙ ↘	0,00

mapa "k" VAŽEC

M1:10 000





# základná mapa

M:1:50 000



PARKING



345

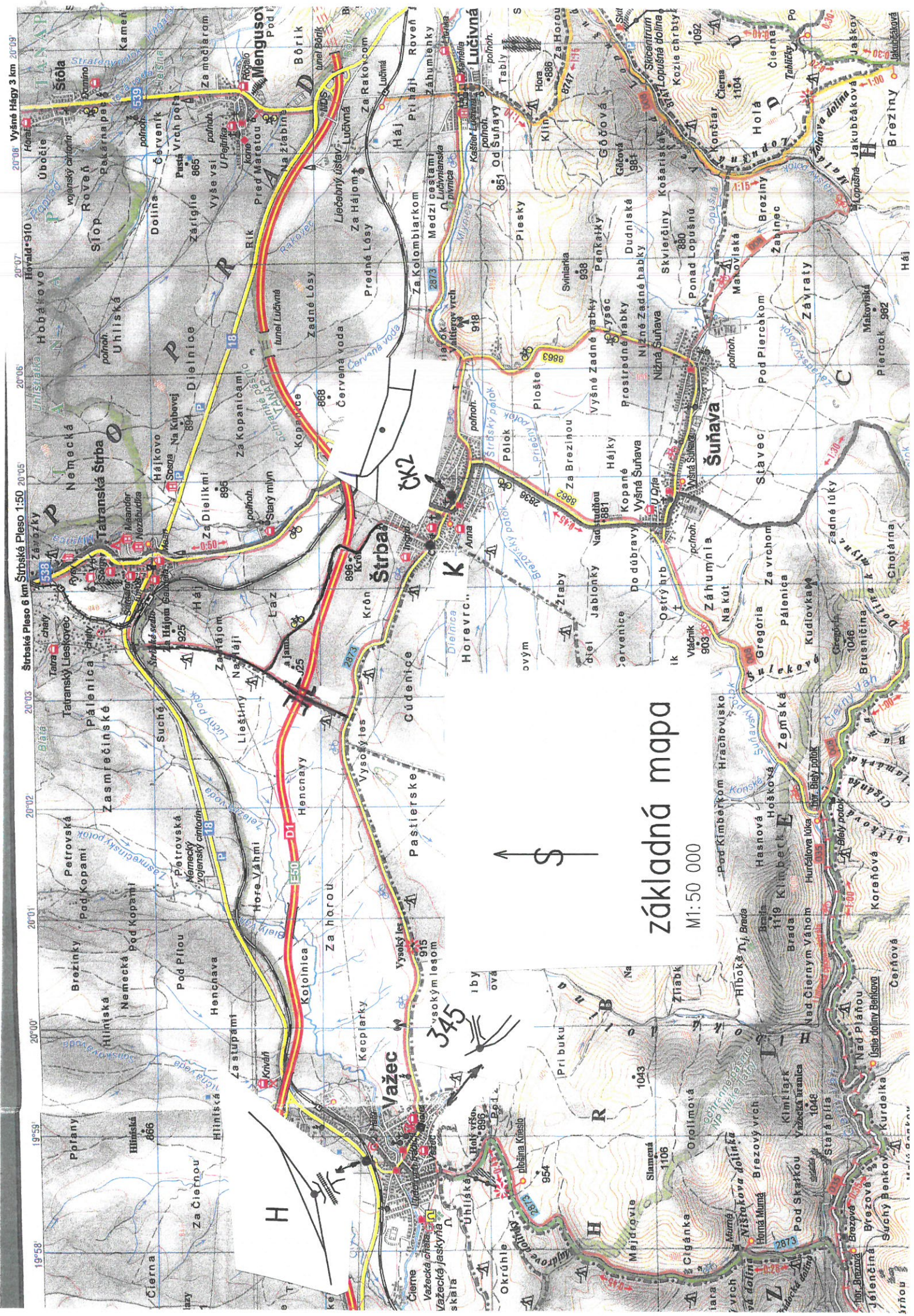


H



ČK1





# základná mapa

M:1:50 000



19°58' 19°59' 20°00' 20°01' 20°02' 20°03' 20°04' 20°05' 20°06' 20°07' 20°08' Vyšné Hágy 3 km 20°09'

Štrbské Pleso 6 km Štrbské Pleso 1:50 20°05' 20°06' 20°07' 20°08' 20°09'